

Attachments



WEIDEMANN
designed for work



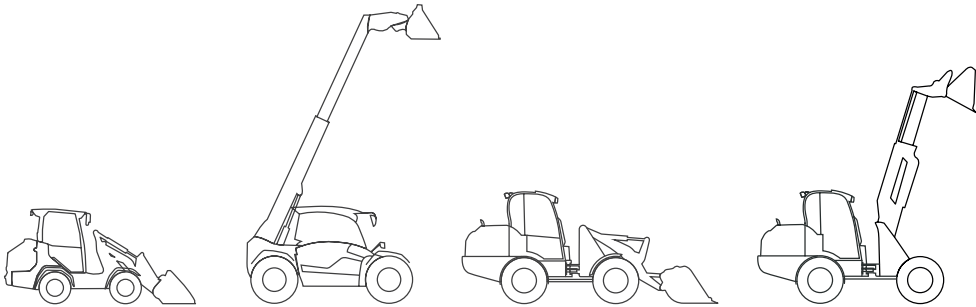
Attachments.

Your machine becomes a multi-tool.

Table of contents.

Human, machine, attachment	4
Attachment changeover	6
Always the right tool.....	6
Hydraulic quickhitch system by Weidemann	6
Easy Coupler System (ecs)	7
Moving material	8
Buckets	8
Square light materials bucket.....	9
Round light materials bucket.....	9
Digging bucket with replaceable blade	10
Digging bucket with ripper teeth	10
Small grab bucket.....	10
Large grab bucket	11
4-in-1 bucket with replaceable blade	12
4-in-1 bucket with ripper teeth	12
High-tip bucket	13
Multi-service bucket.....	13
Gripping	14
Small fork and grab.....	15
Large fork and grab	15
Lifting and stacking	16
Pallet fork.....	17
Foldable pallet fork.....	17
Pallet fork, floating fork arms.....	17
Pallet fork with turning device	18
Hydraulically adjustable pallet fork with lateral displacement	18
Hydraulically adjustable pallet fork with adjustable tines	19
Hydraulically adjustable pallet fork with adjustable tines and lateral displacement	19
Load hooks.....	19
Silage	20
Feed dosing bucket with worm gear.....	21
Feed distributor.....	21
Silage shear bucket	21
Hydraulically adjustable feed slide plate (without steel core).....	22
Bale handling.....	23
Large bale fork.....	24
Large, foldable bale fork	24
Bale spike for pallet fork.....	24
Bale spike	25
Round bale gripper	25
Round and square bale gripper	26
Round bale wrapper	26
Bale grabber V500.....	27
Bale grabber B7000.....	27
Bale grabber V40	28
Bale grabber W500.....	28
Mulching and mowing	29
Flail mulcher.....	30
Flail mower with collecting tray	30
Fence mower.....	31
Dual-blade mower	31

Cleaning and maintaining	32
Surface cleaning.....	32
Rubber slider	33
High-pressure washer.....	33
Weed brush	34
Broom.....	34
Rotary sweeper 20 without collecting tray	35
Rotary sweeper 25.....	36
Rotary sweeper 580 dual.....	36
Rotary sweeper 30 dual.....	36
Winter service.....	37
Snowplough	38
V-shaped snowplough.....	38
Small spreader.....	38
Specialist tools	39
Pruning saw.....	40
Hedge cutter.....	40
Stump grinder.....	41
Muck-truck	41
Litter bin.....	42
Cutter	42
Ground planer.....	42
Spreader.....	43
Auger.....	43
Bedding stalls planer	44
Pot gripper.....	44
Riding arena and track planer.....	45
Material pusher	45
The right choice for your operation	46
Weidemann – traditionally efficient	48
Weidemann – your strong partner	49



The perfect interplay.

Human, machine and attachment.

Economic efficiency is currently one of the most important features that machines should bring to your business. The faster and more time-saving a wheel loader can manoeuvre, the higher its performance. For Weidemann machines, economy means technically sophisticated solutions, such as a powerful drive, large lift height, strong kinematics, high degree of manoeuvrability, excellent stability and an efficient quickhitch system for attachments. First, the right attachments make our machine a real multi-tool within your operation.

The optimal interplay of human, machine and attachment is the key to more economic efficiency and efficiency. The more straight-forward the tool change is, the faster the machine is ready to use again. The faster and more time-saving a machine can manoeuvre, the higher its performance.

The right machine.

You can get the Weidemann Hoftracs®, wheel loaders and telescopic wheel loaders as well as telehandlers with finely graded performance so that with the machine selection, you are already able to determine the optimal machine for your work tasks.



High hydraulic performance.

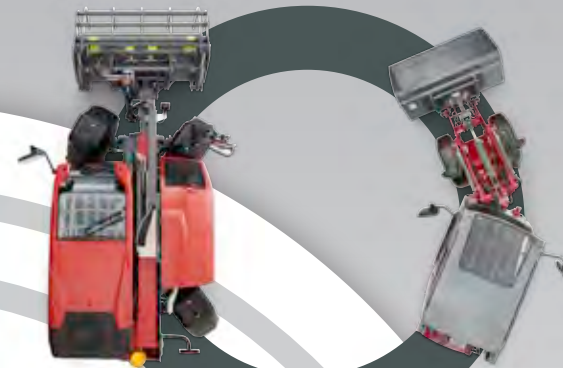
A Weidemann machine has sufficient hydraulic performance and is therefore suitable for operating many different attachments. Furthermore, many models can, for example, be equipped with a High Flow high-performance hydraulic system. The flexible combination of the machine with a variety of hydraulically-powered attachments covers a variety of work tasks.

Advantage: machines with high hydraulic performance are very economical as there is no need to change to a larger machine.



Good all-round visibility.

No matter whether it's an operator's canopy or a cabin - all Weidemann operator platforms provide excellent all-round visibility. Included herein is the optimal view of the attachment and the working area in every position of the boom or the telescopic arm. Visibility to the side and to the rear are absolutely crucial for optimal manoeuvrability - to remain on the safe side!



Compact machines with a high level of manoeuvrability.

Especially when things become tight, e.g. work in stables or storage areas, our telehandlers feature small radius and optimum manoeuvrability.

Consistent operating philosophy.

There is a consistent operating concept with clearly categorised and ergonomically designed switches and keypads behind all Weidemann machines. In terms of manner, all machines are very similar or the same to operate. This makes it possible for the operator to easily understand the machine, whereby they are well oriented and can work safely.



Ergonomic working area.

A lot of legroom, clearly arranged operational controls, comfortable operator's seat and an adjustable steering column - these aspects make up a work space in which the operator is motivated and supported all round. Due to the well-coordinated out-fitting comfort is increased; it is therefore possible to work optimally with the machine for longer.



Attachment changeover.

Only the right attachment makes our machines into true problem solvers for your respective work task. The Weidemann attachments were designed specifically for this purpose. With the richly varied and well thought-out product range, our machines become highly functional multi-tools that meet the demands of any application.

Always the right tool mounting.

Weidemann mounts.

- Weidemann Hoftracs®, wheel loaders, telescopic wheel loaders and compact telehandlers are equipped with the tried-and-tested Weidemann mount, as standard (adapted to the size of the machine). Depending on the model, a mechanical or hydraulic version is available.
- 7 and 9 m telehandlers are equipped with the Kramer or Manitou mount (mechanical/hydraulic).
- Machines from the 90-series are equipped with the Volvo TPV mount (hydraulic).
- Depending on the machine model, other mounts like Euro, Skid Steer, SMS, etc. are optionally available.



Adapter plate for Euro.

- With the adapter plate for Euro, attachments can be used for both the loaders and tractors.
- Flexible application possible.
- Very compact design to keep the tipping load loss as low as possible.
- Weight: 72 kg to 80 kg.



Adapter plate for MV.

- With this adapter, MV attachments (old Weidemann mount) can be used.
- Flexible application possible.
- Weight: 72 kg.

Weld-on hooks.

- As a result, it is possible to convert to the Weidemann quickhitch system Easy Coupler System (ecs).
- Advantage: use of already present attachments with the Weidemann quickhitch system Easy Coupler System (ecs).
- Design: weld-on hooks ecs set, weld-on hooks set HT/HV, weld-on hooks set RL/HV.



Hydraulic quickhitch system by Weidemann.

Thanks to the hydraulic quickhitch system, attachments can be readily exchanged. Your Weidemann machine is therefore always ready for use. This increases productivity and profitability.



Easy Coupler System (ecs).

The Easy Coupler System (ecs) is a device to automatically connect the third control circuit to the small wheel loaders, Hoftracs® and compact telehandlers. The manual connection of the third control circuit presents a significant time expense, safety risk and reduction in efficiency, particularly with applications that necessitate the frequent change of attachments. To optimise this process and to make the changeover of attachments clearly easier, Weidemann has developed the ecs for you.



Efficient and safe.

Farm and wheel loaders are mobile work machines with which the changeover of attachments normally occurs via a hydraulic lock between the coupling frame and the attachment from the operator's seat. A hydraulic oil supply is required for all attachments containing a hydraulic auxiliary function, this is via the 3rd control circuit. To connect these, the machine operator must leave their work station and manually or semi-automatically perform the coupling procedure.

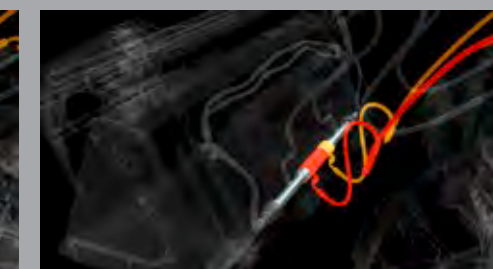
75% of all attachments with an auxiliary function are operated via a third control circuit. For that reason, Weidemann consciously focussed on a simple, sturdy and cost-optimised design in the development of the ecs. The aim was to provide farmers, livestock owners and companies with frequent changes in machine application with extensive access to this application, while simultaneously improving the comfort and work safety.

Flexible use.

Those who choose Weidemann ecs can, of course, continue to use existing attachments with the third control circuit. All the usual connections remain the same on the drawbar.

The ecs can also be retrofitted on existing attachments for optimal efficacy so that you can fully utilise the benefits of the system at any time.

Automatic connection of the 3rd control circuit.



The oil flows into the lock pins and automatically connects to the attachment via the "flat face hydraulic coupling". With this the hydraulic oil is supplied directly into one of the two locking bolts and fed to the device via an axial drill. The connection to the oil circuits is thus made automatically, cleanly, in an environmentally friendly way, and securely - even under pressure. The return flow takes place accordingly via the two lock bolts.

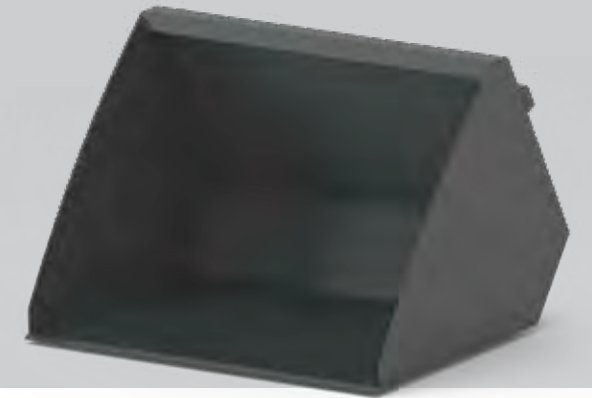
Moving material.

Buckets.



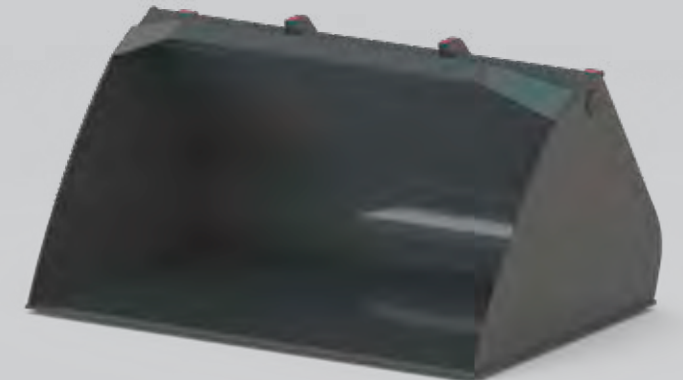
Square light materials bucket

- Top edge of bucket runs parallel to the bucket bottom, which facilitates work.
- Increased handling capacity through elongated bottom and increased side walls.
- Low-wear scraper edge with highly abrasion-resistant material made from Hardox 400.
- Width: 800 mm – 2,000 mm,
Capacity: 0.28 m³ – 1.03 m³,
Weight: 110 kg – 275 kg.



Round light materials bucket

- Specifically developed for lightweight materials, reinforced design.
- Top edge of bucket runs parallel to the bucket bottom, which facilitates work.
- Increased load capacity due to the extended floor and reinforced, curved side walls.
The overload protection minimises spillage loss.
- Low-wear scraper edge with highly abrasion-resistant material made from Hardox 400, exchangeable if needed.
- Width: 1,500 mm – 2,600 mm,
Capacity: 1.22 m³ – 3.50 m³,
Weight: 331 kg – 755 kg.



Digging bucket with replaceable cutting edge

- Specifically for use in the ground.
- Optimal volume capacity for working with heavy goods due to the sturdy design.
- Low-wear scraper edge with highly abrasion-resistant material made from Hardox 400, exchangeable if needed.
- Digging bucket includes front-edge protection bar.
- Optimal bucket shape for best filling.
- Width: 1,150 mm – 2,500 mm,
Capacity: 0.27 m³ – 1.80 m³,
Weight: 161 kg – 715 kg.



Digging bucket with ripper teeth

- Specifically for use in the ground.
- Optimal volume capacity for working with heavy goods due to the sturdy design.
- Low-wear scraper edge with highly abrasion-resistant material made from Hardox 400, exchangeable if needed.
- Digging bucket includes front-edge protection bar.
- Optimal bucket shape for best filling.
- Width: 1,150 mm – 2,500 mm,
Capacity: 0.27 m³ – 1.60 m³,
Weight: 148 kg – 637 kg.



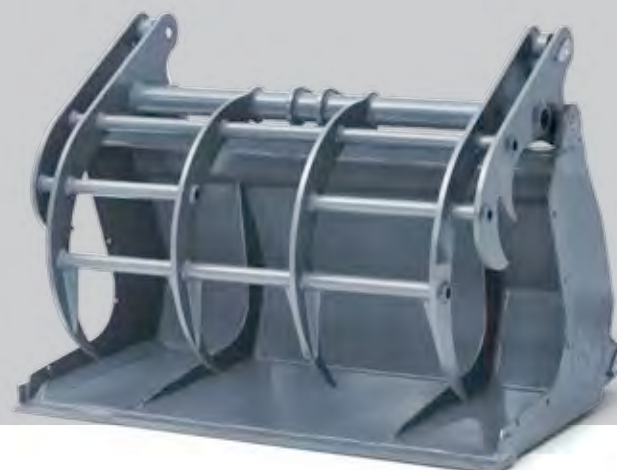
Small grab bucket

- Suitable for handling loose materials, such as silage, muck, wood chips, bark mulch, green waste, etc.
- High grip force due to the two cylinders.
- Side parts of the bucket can be removed.
- Low-wear scraper edge with highly-resistant material.
- Width: 920 mm – 1,600 mm,
Capacity: 0.25 m³ – 0.49 m³,
Weight: 152 kg – 319 kg.

Requirements

- Connection to the machine required: 3rd control circuit.

Also available as ecs (Easy Coupler System) design.



Large grab bucket

- Suitable for handling loose materials, such as silage, muck, wood chips, bark mulch, green waste, etc.
- High grip force due to the two cylinders.
- Side parts of the bucket can be removed.
- Low-wear scraper edge with highly abrasion-resistant material.
- Width: 1,800 mm – 2,600 mm,
Capacity: 0.93 m³ – 2.60 m³,
Weight: 650 kg – 1,200 kg.

Requirements

- Connection to the machine required: 3rd control circuit.

Also available as ecs (Easy Coupler System) design.



4-in-1 bucket with replaceable blade



- Versatile in application for digging and loading works.
- Goods, such as large stones or scrub, can be easily picked up and dumped by using the gripper function.
- Can be opened for emptying, which increases the dumping height.
- Low-wear scraper edge with highly abrasion-resistant material made from Hardox 400 with replaceable blade, exchangeable if needed.
- 4-in-1 bucket including front-edge protective bar.
- Width: 1,250 mm – 2,500 mm,
Capacity: 0.26 m³ – 1.8 m³,
Weight: 290 kg – 1,012 kg.

Requirements

- Connection to the machine required: 3rd control circuit.

Also available as ecs (Easy Coupler System) design.

High tip bucket



- Designed to reach an increased overhead loading height, specifically developed for lightweight materials.
- Ideal for trailers with very high sides.
- Low-wear scraper edge with highly abrasion-resistant material and powerful discharge possible due to the two dumping cylinders.
- Dumping height approx. 400 mm above bucket pivot point.
- Width: 2,500 mm,
Capacity: 2.90 m³ – 3.10 m³,
Weight: 1,650 kg – 1,770 kg.

Requirements

- Connection to the machine required: 3rd control circuit.

4-in-1 bucket with ripper teeth



- Versatile in application for digging and loading works.
- Goods, such as large stones or scrub, can be easily picked up and dumped by using the gripper function.
- Can be opened for emptying, which increases the dumping height.
- Low-wear scraper edge with highly abrasion-resistant material made of Hardox 400 with ripper teeth.
- 4-in-1 bucket including front-edge protective bar.
- Width: 1,250 mm – 2,500 mm,
Capacity: 0.23 m³ – 1.70 m³,
Weight: 265 kg – 935 kg.

Requirements

- Connection to the machine required: 3rd control circuit.

Also available as ecs (Easy Coupler System) design.

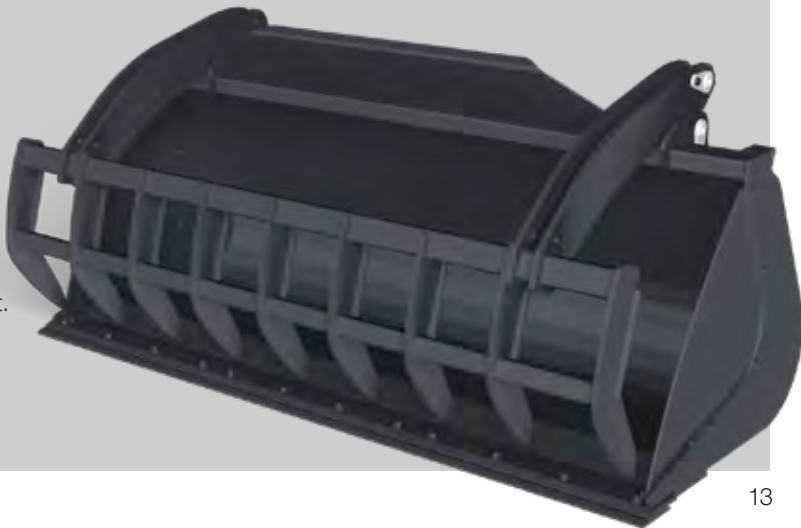


Multi-service bucket

- Suitable for handling loose materials, such as wood chips, bark mulch, green waste, etc.
- High grip force due to the two cylinders.
- Upper tong with stable, welded tines.
- Low-wear scraper edge with highly abrasion-resistant material.
- Width: 2,450 mm,
Capacity: 1.75 m³.

Requirements

- Connection to the machine required: 3rd control circuit.



Moving material.

Gripping.



Fork and grab, small

- Suitable for mucking out pens.
- Likewise possible to transport round and square bales.
- For handling loose materials, such as green cuttings, green waste, etc.
- Croc upper part with one cylinder and a total of 5 tines, tine length 600 mm.
- Width: 790 mm – 860 mm,
Tines: 5,
Weight: 150 kg – 155 kg.

Requirements

- Required connection to machine: 3rd control circuit.

Fork and grab, large

- Suitable for mucking out pens.
- Likewise possible to transport round and square bales.
- For handling loose materials, such as green cuttings, green waste, etc.
- Croc upper part divided from width 1,100 mm.
This enables a good adaptation to the material to be gripped.
Tine length: 800 mm.
- Width: 870 mm – 2,550 mm,
Tines: 5 – 13.

Requirements

- Connection to the machine required: 3rd control circuit.



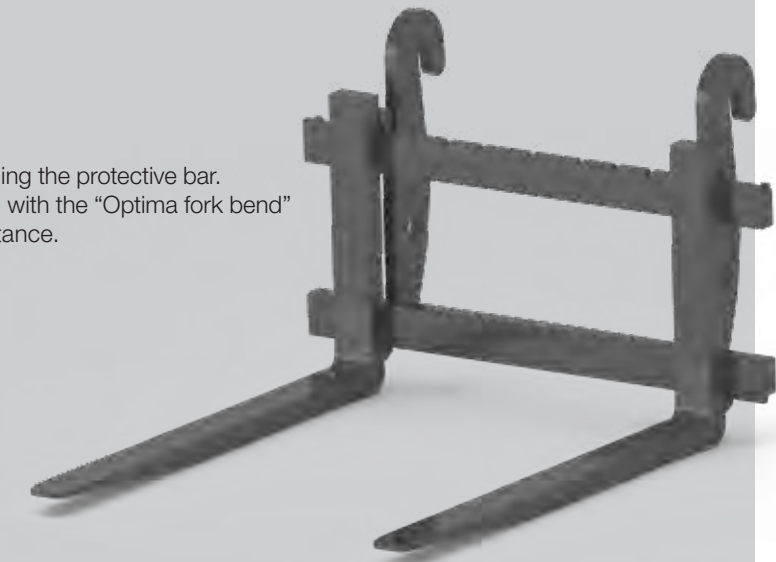
Moving material.

Lifting and stacking.



Pallet fork

- Transport of various goods on pallets.
- Best possible view of the freight.
- Pallet fork with two hooks for 12° more twist angle, including the protective bar.
- The tines are adjustable in width. Made from special steel with the "Optima fork bend" for increased service life and up to three-fold wear resistance.
- Width: 1,000 mm – 2,000 mm,
Payload: 2,000 kg – 5,500 kg,
Weight: 140 kg – 470 kg.



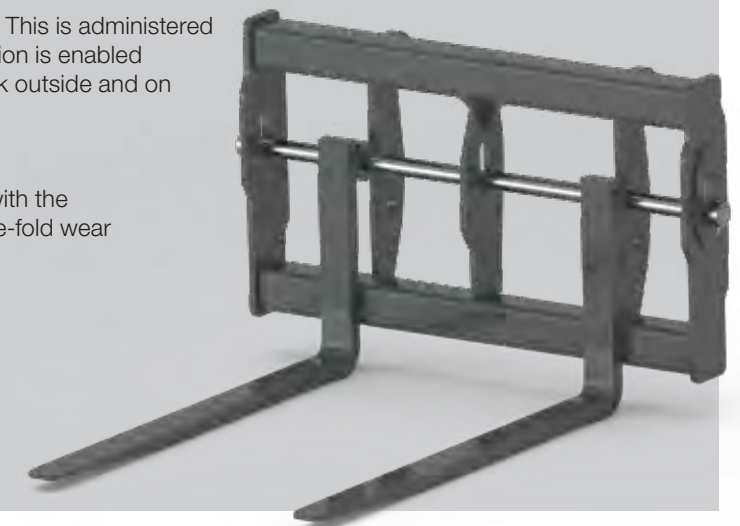
Foldable pallet fork

- Fold-up tines for driving on the roads and transporting diverse goods on pallets.
- Best possible view of the freight.
- Includes protective bar. Pallet fork with two hooks on the mount for 12° more twist angle.
- The tines are adjustable in width. Made from special steel with the "Optima fork bend" for increased service life and up to three-fold wear resistance.
- Width: 1,000 mm – 1,200 mm,
Payload: 2,000 kg – 2,500 kg,
Weight: 176 kg – 216 kg.



Pallet forks, floating fork arms

- An eyelet is affixed to each fork arm as a mounting bracket. This is administered to a shaft already present on the pallet fork. A floating function is enabled through the shaft suspension, which makes it easier to work outside and on uneven subbases.
- Transport of various goods on pallets.
- Best possible view of the freight.
- The tines are adjustable in width. Made from special steel with the "Optima fork bend" for increased service life and up to three-fold wear resistance.
- Length: 1,200 mm,
Payload: 2,500 kg – 5,000 kg,
Weight: 179 kg – 243 kg.



Pallet fork with turning device

- Side rotation up to max. 205°, therefore complete emptying of suitable boxes and containers.
- Boxes and containers are emptied by turning to the left.
- Arm for fastening the box or the container is adjustable.
- Transport of various goods on pallets.
- Length: 1,100 mm,
Payload: 1,500 kg – 2,500 kg,
Weight: 426 kg – 468 kg.

Requirements

- Required connection to machine: 3rd control circuit.

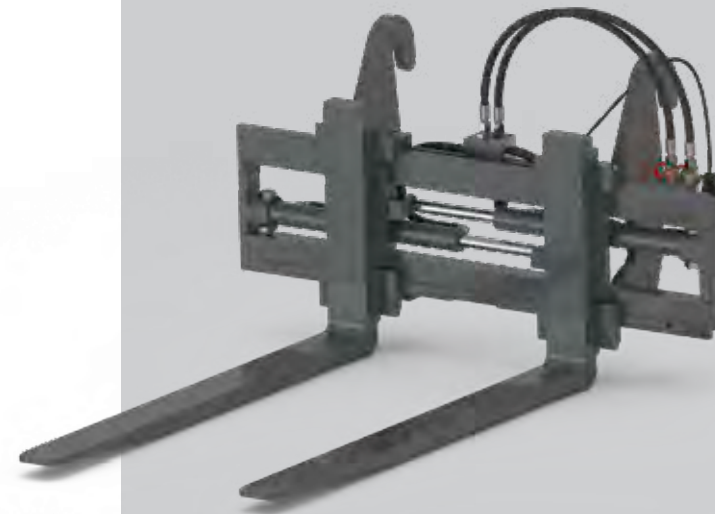


Pallet fork with adjustable tines

- The tines are hydraulically adjustable in width.
- Comfortable operation from the operator's platform.
- Transport of various goods on pallets.
- Best possible view of the freight.
- Made from special steel with the "Optima fork bend" for increased service life and up to three-fold wear resistance.
- Width: 1,200 mm,
Payload: 2,500 kg – 3,200 kg,
Weight: 256 kg – 377 kg.

Requirements

- Required connection to machine: 3rd control circuit.

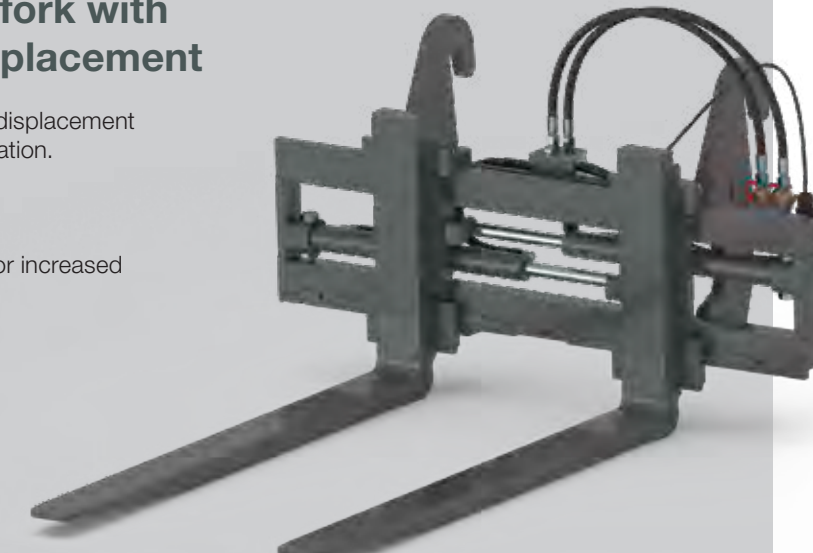


Hydraulically adjustable pallet fork with adjustable tines and lateral displacement

- The tines are hydraulically adjustable in width. Lateral displacement possible to both the left and right as well as in combination.
- Comfortable operation from the operator's platform.
- Transport of various goods on pallets.
- Best possible view of the freight.
- Made from special steel with the "Optima fork bend" for increased service life and up to three-fold wear resistance.
- Width: 1,200 mm,
Payload: 2,500 kg – 3,200 kg,
Weight: 262 kg – 379 kg.

Requirements

- Required connection to machine: 3rd control circuit.

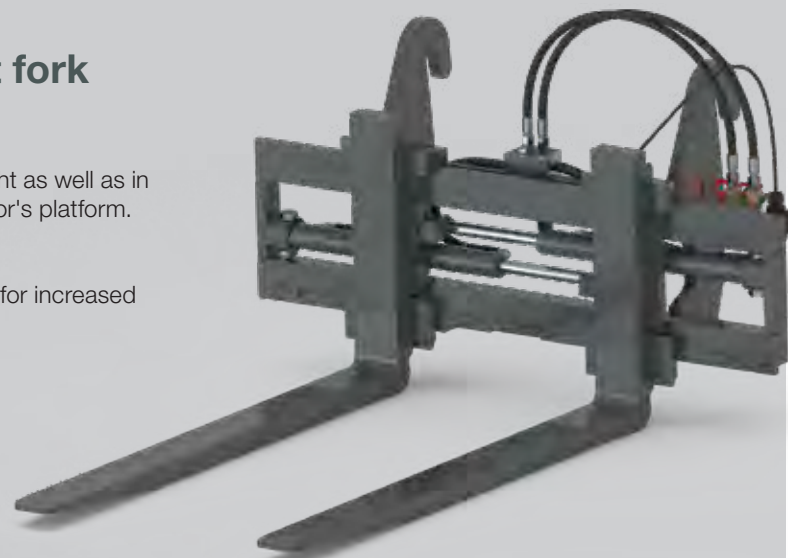


Hydraulically adjustable pallet fork with lateral displacement

- Lateral displacement possible to both the left and right as well as in combination. Comfortable operation from the operator's platform.
- Transport of various goods on pallets.
- Best possible view of the freight.
- Made from special steel with the "Optima fork bend" for increased service life and up to three-fold wear resistance.
- Width: 1,200 mm,
Payload: 2,500 kg – 3,200 kg,
Weight: 258 kg – 332 kg.

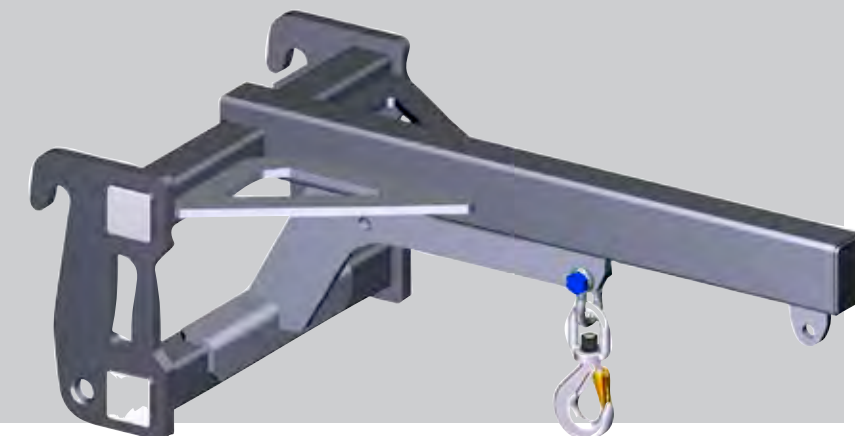
Requirements

- Required connection to machine: 3rd control circuit.



Load hook

- The load hook makes it possible to lift heavy loads safely.
- The swivel hook with fastening can be rotated under a load and aids in the precise positioning of the load.
- 1,000 mm display.
- The different loading points.
- Load-bearing capacity: 2.50 t – 1.10 t.



Moving material.

Silage.

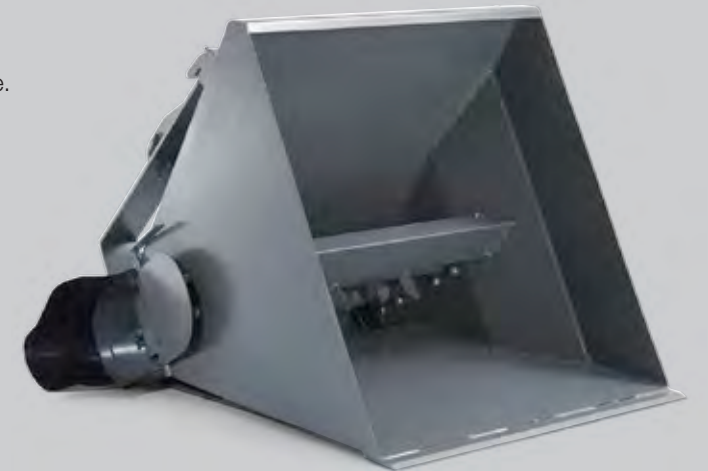


Feed dosing bucket with worm gear

- Suitable for coarse meal, pellets and fodder beet.
- One-sided ejection to the right.
- Self-filling possible through slanted, heightened uptake edge.
- Length: 980 mm – 1,800 mm,
Capacity: 0.60 m³ – 1.20 m³,
Weight: 260 kg – 589 kg.

Requirements

- Required connection to machine: 3rd control circuit.



Feed distributor

- Suitable for spreading grass and corn silage on the feed table.
Ejection possible on both sides.
- Self-filling possible through slanted, heightened uptake edge.
- Good view of the container due to the perforated plate in rear.
- Design either with hydraulic fold-down tine bar (only for SV1001) or with fixed uptake edge.
- Overall width: 1,280 mm – 1,660 mm,
Capacity: 1.55 m³ – 2.15 m³,
Weight: 320 kg – 490 kg.

Requirements

- Connection: 2 hoses/1 electrical connection.
- Required connection to wheel loader, telescopic wheel loader, telehandler: 3rd control circuit, electrical connection in front.



Silage bucket

- Suitable for the removal of maize and grass silage.
- Transport of other bulk materials, e.g. concentrated feed and grist, is likewise possible.
- Torsion-resistant upper tong for extremely compact silage and sturdy bucket base with wear strips.
- The serrated cutting edge will leave behind a smooth cutting edge and clean silo wall.
- Width: 940 mm – 1,990 mm,
Capacity: 0.40 m³ – 1.35 m³,
Weight: 450 kg – 980 kg.

Requirements

- Required connection to machine: 3rd control circuit.



Hydraulically adjustable feed slide plate (without steel core)

- Suitable for pushing feed on the feed table.
- Hydraulically adjustable blade over a large angle.
- Swivel direction to right and left.
- Width: 1,800 mm – 2,200 mm,
Max. angle: 70°,
Weight: 225 kg – 225 kg.

Requirements

- Required connection to machine: 3rd control circuit.



Moving material. Bale handling.



Big bale fork

- Suitable for simultaneous transporting and stacking of several square bales.
- Safety bar prevents bales from falling down on the machine.
- Width: 1,088 mm,
Tine length: 1,100 mm,
Weight: 174 kg – 174 kg.



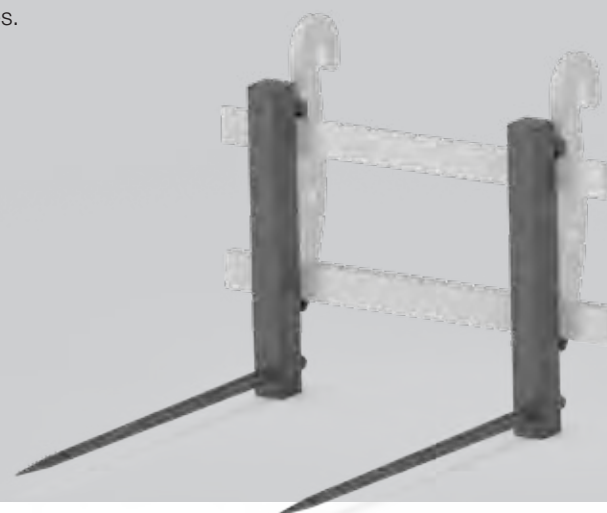
Large, fold-down bale fork

- Suitable for simultaneous transporting and stacking of several square bales.
- The tine can be folded up, where required.
- Protective bars prevent the bales from falling off the machine. These can, where required, be folded down.
- Height when folded down: 1,213 mm,
Height when extended: 1,895 mm.
- Width: 1,044 mm – 1,800 mm,
Weight: 170 kg – 271 kg.



Bale spike for pallet fork

- Suitable for transporting and stacking round and square bales.
- To hang on pallet form frame.
- Two tapered tines.
- Tine length: 1,100 mm,
Tines: 2,
Weight: 35 kg.



Bale spear

- Suitable for transporting and stacking round and square bales.
- Two tapered tines.
- Width: 1,055 mm – 1,200 mm.

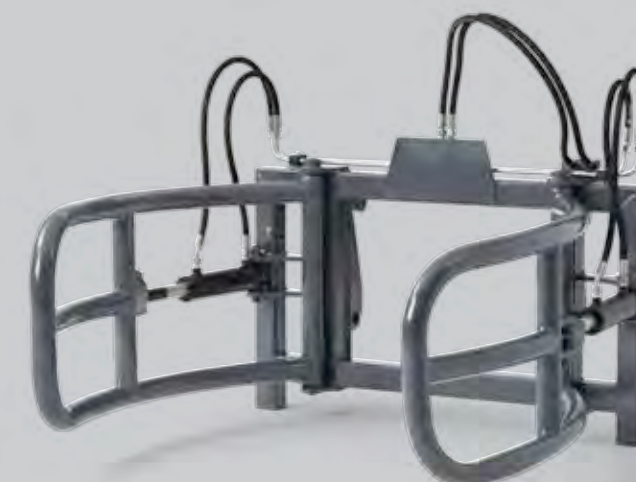


Round bale fork

- Suitable for transporting and stacking wrapped bales and round bales.
- The bales are not damaged.
- Bale diameter: 900 mm – 1,800 mm,
Weight: 160 kg.

Requirements

- Required connection to machine: 3rd control circuit.



Round and square bale gripper

- Suitable for transporting and stacking wrapped bales and round bales or square bales.
- The bales are not damaged.
- Round bale diameter: 900 mm – 1,600 mm,
Square bales: 800 mm – 1,500 mm,
Weight: 353 kg – 370 kg.

Requirements

- Required connection to machine: 3rd control circuit.



Bale grabber V500

- Suitable for transporting and stacking several square bales at the same time.
- Due to the additional lateral tines (hydraulically operated), the bales are securely held with quick loading procedures.
- Can be converted to a film bale tong.
- Tines: 3/14.
- Width: 1,200 mm,
Height: 2,550 mm,
Weight: 760 kg.

Requirements

- Required connection to machine: 3rd control circuit.



Round bale processing device

- Can be used to process silo and straw bales.
- Four tapered tines.
- Width: 910 mm,
Tine length: 1,100 mm,
Weight: 143 kg – 147 kg.

Requirements

- Required connection to machine: 3rd control circuit.



Bale grabber V7000

- Suitable for transporting and stacking several square bales at the same time.
- The tines can be folded up, e.g. for driving on the road.
- Due to the additional lateral tines (hydraulically operated), the bales are securely held with quick loading procedures.
- Tines: 3/14.
- Width: 1,200 mm,
Height: 2,550 mm,
Weight: 760 kg.

Requirements

- Required connection to machine: 3rd control circuit.



Mulching and mowing.

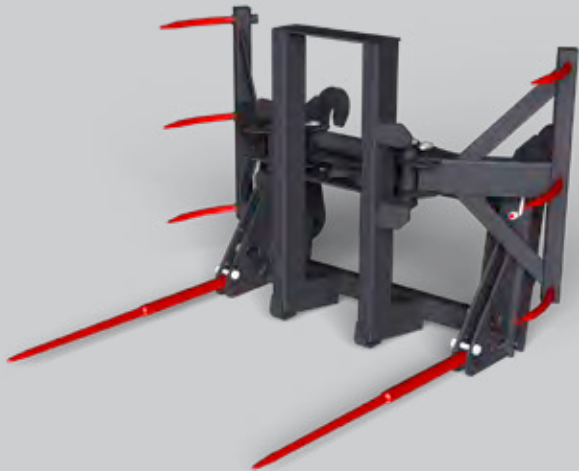


Bale grabber V40

- Suitable for transporting and stacking several square bales at the same time.
- Two tines, can be folded up where required.
- Width: 1,625 mm,
Height: 840 mm,
Tine length: 1,100 mm.

Requirements

- Required connection to machine: 3rd control circuit.



Bale grabber W500

- Suitable for transporting and stacking several square bales at the same time.
- Due to the additional lateral tines (hydraulically operated), the bales are securely held with quick loading procedures.
- Can be converted to a film bale tong.
- Includes kit for film bale tong.
- Width: 1,604 mm,
Height: 1,774 mm,
Tines: 10.

Requirements

- Required connection to machine: 3rd control circuit.



Flail mulcher

- Well suited to mowing long grass and green spaces, even on uneven ground.
- Good ground contour adaptation with uniform cutting horizon.
- Skid wear plate made from carbide, screwable.
- Height-adjustable front impeller made from rubber.
- Operating width: 1,200 mm – 1,600 mm,
Oil volume: 35 l/min – 60 l/min,
Weight: 280 kg – 350 kg.

Requirements

- Connections: 1 hose (pressure), 1 pressureless return.
- Required connection to wheel loader, telescopic wheel loader: 3rd control circuit, front pressureless return.
- Recommended: notch for 3rd control circuit.



Flail mower with collecting tray

- Mowing green spaces and long grass, like in park grounds.
- Mower's height adjustable via the impellers.
- Hydraulic operation of the collection tray.
- Collection tray for mowed material.
- Type 1600: 50 blades
- Operating width: 1,180 mm – 1,480 mm,
Cut height: 30 mm – 80 mm,
Collection tray volume: 900 l.

Requirements

- Recommended: notch for 3rd control circuit.

Standard:

- Connections: 2 hoses (mower drive), 2 hoses (collection tray), 1 pressureless return (mower drive).
- Required connection to wheel loader: 3rd control circuit, 4th control circuit, unpressurised reflux.
- Required connection to telescopic wheel loader: 3rd control circuit, switch valve, unpressurised reflux.

Electrical valve:

- Connections: 2 hoses (mower drive system + operation of collection tray), 1 pressureless return (mower drive system), 1 electrical connection.
- Required connection to wheel loader/telescopic wheel loader: 3rd control circuit, pressureless return, front electrical connection.

Lighting:

- Connections: 1 electrical connection.
- Required connection to wheel loader/telescopic wheel loader: electrical connection in front.



Fence mower

- Suitable for free mowing of fence posts.
- Good, clean cut around the posts.
- No laborious, manual free mowing of the fence posts required.
- Hydraulically adjustable transport position to the work position from the operator's seat.
- Operating width: 950 mm,
Incline: +45° to -30°,
Minimum oil volume: 20 l/min.

Requirements

- Required connection to machine: 3rd control circuit.
- Detent for control lever/continuous function 3rd control circuit.



Double-blade rotary mower

- Possible to cut or mow in three different positions.
- Lateral mowing of hedgerows possible.
- Width: 1,500 mm,
Minimum oil volume: 34 l/min,
Weight: 200 kg.

Requirements

- Connections: 1 hose, 1 pressureless return.
- Required connection to machine: 3rd control circuit, front pressureless return.

Cleaning and maintaining.

Surface cleaning.



Rubber slide

- Suitable for pushing on slotted floors.
- Pushing on moist tar and concrete floors is also possible.
- Width: 1,200 mm – 2,000 mm,
Rubber height: 400 mm,
Weight: 76 kg – 124 kg.

High-pressure washer

- Compact dimensions and low weight: it is therefore ideal for cleaning courtyards, road, bicycle paths, car parks, etc.
- Clean with the spray bar and high-pressure cleaning gun, includes 20 m hose reel.
- The swivel device of the spray bar is hydraulically adjustable to the left and the right via the E-connection.
- Quick water filling due to the quick coupling and optimised water consumption due to the fine spray nozzles.
- Operating width: 1,650 mm,
Tank capacity: 560 l,
Nozzles: 9.

Requirements

- Recommended: manual throttle/manual inching.
- Connections: 1 hose, 1 pressureless return, 1 electrical connection (swivel spray bar).
- Required connection to wheel loader/telescopic wheel loader: 3rd control circuit, detent for control lever 3rd control circuit, pressureless return, front electrical connection.



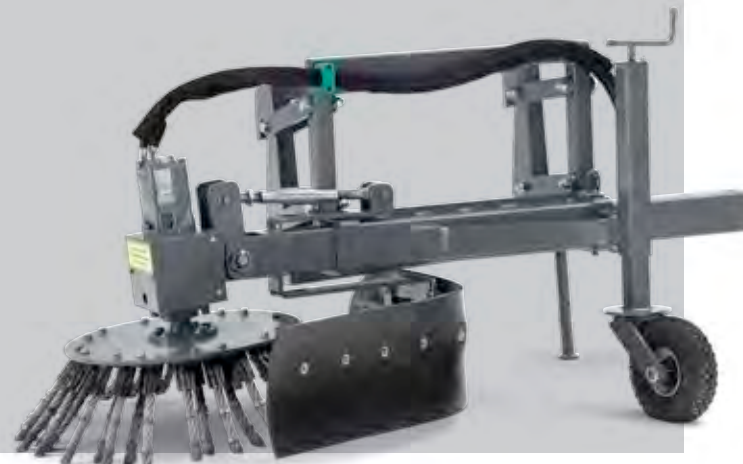


Weed brush

- Perfectly suited for the environmentally friendly removal of weeds from paving, joints and roadsides.
- Pneumatic support wheel, pendulum compensation 100 mm.
- Possible to adjust incline by 20°.
- Low-wear steel bristles, replaceable.
- Width: 1,300 mm – 1,800 mm,
Brush diameter: 700 mm,
Weight: 240 kg.

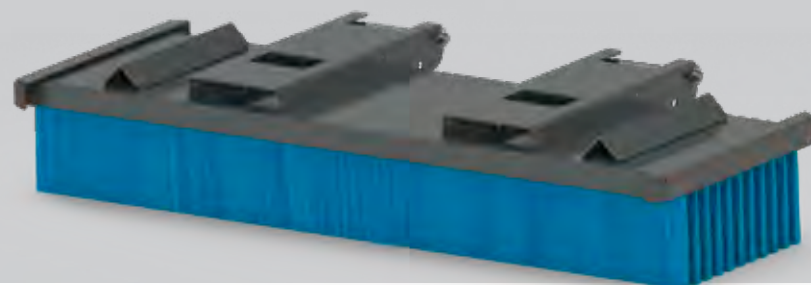
Requirements

- Required connection to machine: 3rd control circuit.
- Recommended: detent for control lever/continuous function 3rd control circuit.



Sweeper

- Simple and affordable attachment. Standard: pick-up by pallet fork. Option: pick-up by bucket.
- Very good cleaning result.
- Bristles made of wear-resistant material, low wear.
- Quick and easy uptake of sweeping - benefit: this can be quickly used during loading works to avoid the unnecessary compaction of material on the road.
- Width: 1,500 mm – 2,500 mm,
Weight: 120 kg – 185 kg.



Rotary sweeper 20 without waste collection tray

- Compact rotary sweeper with many equipment options. Ideal for cleaning courtyards, roads, bicycle paths, car parks, etc.
- Sweeping roller made of polypropylene, Ø 520 mm. Optional: waste collection tray with wire rope or hydraulic emptying.
- Mechanical swivel device and sturdy design.
- Drive system with a very sturdy Gerotor motor.
- Width: 1,250 mm – 2,300 mm,
Waste collection tray volume: 135 l – 245 l,
Weight excl. special equipment: approx. 130 kg – 190 kg.

Requirements

- Required connection to machine: 3rd control circuit.
- Recommended: detent for control lever/continuous function 3rd control circuit.



Rotary sweeper 25

- The rotary sweeper 25 provides diverse attachment options as well as different sweeping trimmings and is the ideal partner for moderate difficulty application: ideal for cleaning courtyards, streets, bicycle paths, parking lots, etc.
- Sweeper roller made of polypropylene, Ø 580 mm and drive system with a very sturdy Hydraulic motor. As a result, the rotary sweeper tackles large volumes of dirt and provides excellent ground adjustment.
- Convenient tool-free adjustment of collecting tray and impellers. Adjustment occurs in coordination and is required with wear of the sweeper roller.
- The large-volume waste collection tray guarantees a high level of cleaning performance.
- Operating width: 1,550 mm – 2,600 mm,
Waste collection tray volume: 220 l – 370 l,
Weight excl. special equipment: approx. 160 kg – 215 kg.

Requirements

- Required connection to machine: 3rd control circuit.
- Recommended: detent for control lever/continuous function 3rd control circuit.



Rotary sweeper 580 dual

- With the “dual system” the rotary sweeper can be used to both collect dirt and freely sweep. When sweeping freely without the collection tray, it can be hydraulically lifted.
- Optional: side sweeper and water spray device. With this the sweeper can be optimally applied in use in professional communal road and winter service.
- The drive unit is integrated into the sweeper housing and the lateral chain drive ensures an optimal power transmission.
- Individually adjustable contact pressure of the sweeper roller through variable adjustment.
- Monitoring of the sweeper setting via a scale.
- Operating width: 1,250 mm – 1,850 mm,
Waste collection tray volume: 148 l – 220 l,
Weight excl. special equipment: approx. 160 kg – 180 kg.

Requirements

- Required connection to machine: 3rd control circuit.
- Recommended: detent for control lever/
continuous function 3rd control circuit.



Rotary sweeper 30 dual

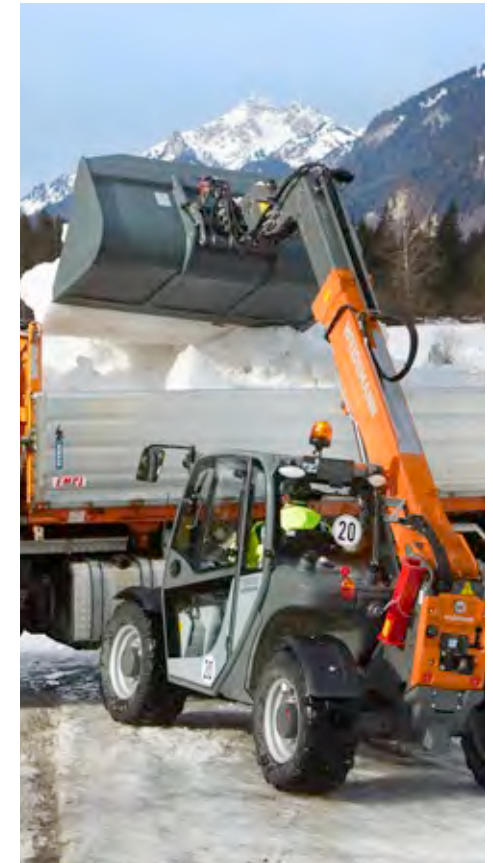
- Using the “Dual System”, the rotary sweeper 30 can be used both to collect waste and also to sweep freely. When sweeping freely without a collection tray, this is hydraulically lifted.
- Optional: side sweeper and water spray device. As a result, the sweeper can be optimally used in communal road and winter service.
- The sweeper roller with a diameter of 640 mm presents great cleaning performance over a very long service life. Sweeper roller made of polypropylene, Ø 600 mm and drive system with a very sturdy Hydraulic motor.
- As a result, the rotary sweeper copes with a large volume of waste and presents great cleaning performance.
- Roller levelling for optimal ground adaptation.
- Individually adjustable contact pressure of the rotary sweeper through variable adjustment using the hand wheel/crank handle and controls of the rotary sweeper setting via a scale.
- Width: 1,850 mm – 2,600 mm,
Waste collection tray volume: 340 l – 430 l,
Weight excl. special equipment: approx. 310 kg – 465 kg.

Requirements

- Required connection to machine:
3rd control circuit.
- Recommended: detent for control lever/continuous
function 3rd control circuit.



Cleaning and maintaining. Winter services.



Specialist tools.

Snowplough

- Wheels with vulcanised tread rubber and a sturdy design ensure a long service life.
- The roller level compensation with a height control indicator and the variable adjustment of the wheels/skids by hand wheel guarantee precise clearing results.
- Standard: hydraulic swivel device via two stable hydraulic cylinders.
- Spring flap segments with vulkan trim (thickness 20 mm, height 150 mm). The elastic edge protection also prevents damage from kerbs and building boundaries.
- Width: 1,300 mm – 2,050 mm,
Weight: 137 kg – 174 kg,
Height: 700 mm – 1,020 mm.

Requirements

- Required connection to machine: 3rd control circuit.



V-shaped snowplough

- The roller level compensation and elastic edge protection ensure optimal ground contour adaptation and provide protection against damage.
- Wheels with vulcanised tread rubber for long service life, infinitely adjustable by using hand wheel.
 - Two dual-acting hydraulic cylinders for pivoting the plate body by 30°.
 - Four different plate positions possible – hydraulically adjustable from the driver's seat. Due to the optional electrical socket on the loader the adjustment can be easily operated using the machine's joystick. An additional cable must be installed.
 - Width: 1,630 mm – 2,640 mm,
Clearing width in V/Y position: 1,426 mm – 2,280 mm,
Weight: 350 kg – 450 kg.

Requirements

- Required connection to wheel loader, telescopic wheel loader, telehandler: 3rd control circuit, electrical connection on front.



Small spreader

- Spreader to distribute: salt, salt and grit mix, grit, sand and muck. Operation via a separate control panel from the operator's seat.
- The lid protects the spreading material (salt) from moisture. All metal parts made of stainless steel.
- Special waterproof agitator technology for even material flow.
- Electrically driven, battery cables for direct supply (12 V) included. With the 3-pole outlet in the cabin the spreader can be quickly and easily installed. The fold-down mount enables flexible application and can be adjusted in terms of height. The spreader can be folded backwards for improved maintenance access. The rear lighting can be fixed to the spreader making it visible to other road users.
- Volume: 70 l – 170 l,
Spread width (variable): 0.8 m – 6 m,
Drive system: electric 12 V.

Requirements

- Fold-up mounting bracket.
- Adapter for mounting bracket.



Pruning saw

- Perfect cut quality for both thin and thick branches.
- Arranged in series: four “Widia” saw blades with 4,000 rpm.
- Work speed up to 5 km/h.
- Hydraulic angle adjustment of the pruning saw up to 90°.
- Operating width: 1,400 mm,
Branch cutting size: 5 mm – 100 mm,
Saw blades: 4 x Ø 345 mm.

Requirements

- Required connection to machine: 3rd control circuit.
- Recommended: notch for 3rd control circuit/hand-inching.

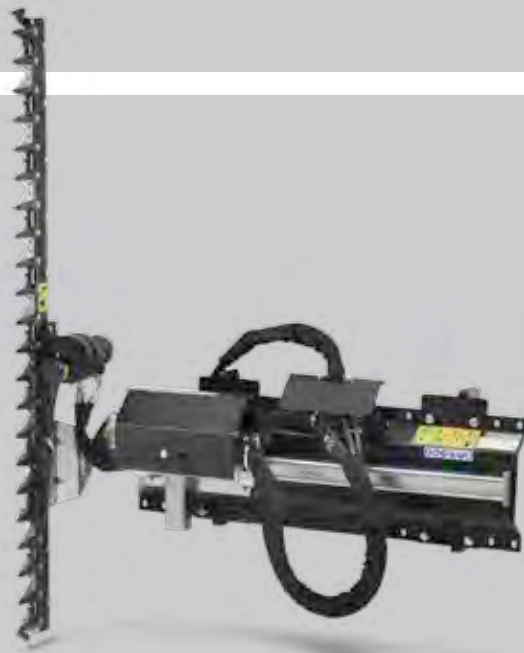


Hedge cutter

- Working speed with good impact power up to (2 km/h).
Cutting frequency between 200 and 400 cuts per minute.
- There are balls on the blade fingers so that the branches cannot get caught.
- Blades are fixed with bolts; quick-change is therefore possible.
- Operating width: 1,650 mm,
Branch cutting size: 5 mm – 19 mm,
Minimum oil quantity: 25 l/min.

Requirements

- Required connection to machine: 3rd control circuit.
- Recommended: notch for 3rd control circuit/hand-inching.



Stump grinder

- Effective milling of tree stumps.
- Suspension can be rotated 360°.
- Quickly replaceable chisels (teeth).
- Pivotal by articulated steering or hydraulically pivoted (two hydraulic cylinders).
- Teeth: 12 – 16,
Minimum oil volume: 30 l/min – 75 l/min,
Weight: 70 kg – 125 kg.

Requirements

- Required connection to machine: 3rd control circuit.
- Recommended: notch for 3rd control circuit.

Connections BSFH20S / BSFH40S:

- 1 hose (milling wheel drive system), 1 hose (return),
1 electrical connection.
- Required connection on wheel loader/telescopic wheel loader:
3rd control circuit, pressureless front return, front 3-pole outlet
for dual function.



Muck-truck

- The tub is made entirely of stainless steel; as a result it is sturdy with a long service life.
- Large capacity, therefore multi-day mucking out is possible with the muck-truck.
- On pivotable rollers, therefore easy to manoeuvre in the stable.
- Axle with large-volume and ball-bearing mounted pneumatic tyres.
- Width: 1,420 mm – 2,320 mm,
Capacity: 1.40 m³ – 2.40 m³,
Weight: 117 kg – 185 kg.



Waste container

- Suitable for the transport of waste, leaves and scrub.
- Mounting by pallet fork or directly by quickhitch system.
- Lateral emptying possible by pallet fork with rotating device.
- Can be flexibly used due to mounting with pallet fork.
- Upper/lower width: 1,000 mm/800 mm,
Height: 1,000 mm,
Capacity: 1.00 m³.



Spreader

- It self-fills well through the sloped, reinforced uptake edge.
- Suitable for sawdust and chopped straw.
- Easy filling due to new container construction.
- Reinforced conveyor belt with additional fabric insert.
- Even more impact power for coarse lime-straw mix and horse manure as well as stable construction (therefore also suitable for larger loaders).
- Ejection optionally to the left or right. Ejection width up to 4 m.
- Overall width: 1,350 mm – 1,750 mm,
Capacity: 1.45 m³ – 1.85 m³,
Weight: 330 kg – 370 kg.

Requirements

- Required connection to machine: 3rd control circuit.



Cutter

- For loosening hard, compacted soils and subsoils.
- Optimal combination with the surface planer: first loosen, then level.
- Ripper teeth at the tip are replaceable.
- Sturdy design, three ripping hooks.
- Weight: 104 kg.



Surface planer

- Best suited to levelling various surfaces, such as gravel surface for paving work, levelling surfaces, riding arena surfaces, etc.
- Sand, gravel and fine soils can be smoothed out quickly and easily.
- Ideally suited to creating riding arenas and grassed areas.
- Width: 1,600 mm – 2,000 mm,
Grille height: 80 mm,
Depth: 1,000 mm



Auger

- Diverse application possibilities: drill holes for setting posts for fences, planting trees and setting signs.
- Different auger drills available.
- Width: 1,240 mm – 1,520 mm,
Diameter: 152 mm – 305 mm,
Weight: 173 kg – 199 kg.

Requirements

- Required connection to machine: 3rd control circuit.



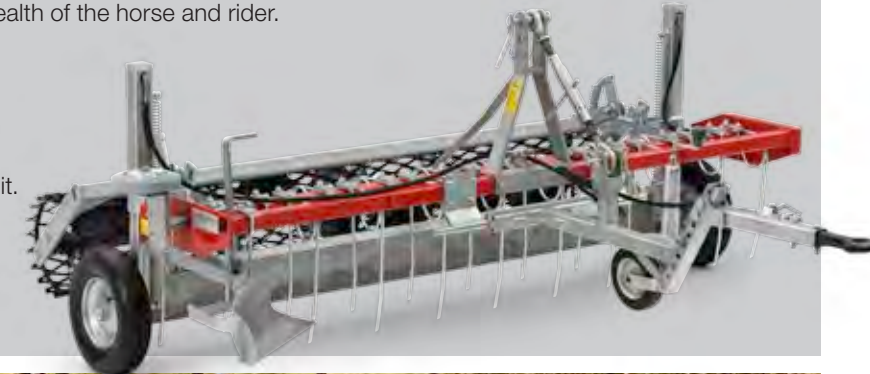


Riding arena and track planer

- The manoeuvrable track planer is suitable for many riding surfaces (particularly for sand, geotextiles and sand-fibre mixtures) and guarantees the professional and efficient maintenance of riding surfaces.
- Particularly ground-protecting work (even between obstacles). Good to operate due to high level of manoeuvrability.
- With various rollers, ideal adjustment to the properties of the ground. The height is individually adjustable.
- Correct maintenance of the riding surface is essential for a pleasant atmosphere when training, when competing and when running, as well as for the safety and health of the horse and rider.
- Width: 1,600 mm – 2,200 mm,
Weight: 200 kg – 280 kg.

Requirements

- Required connection to machine: 3rd control circuit.
- Recommended: hydraulic connection in the rear.



Bedding stalls planer

- Mechanically loosen and level the stalls.
- Enables the effortless and precise mill-off of heavily compacted bedding in the stalls.
- Very manoeuvrable due to the hydraulic lifting in a vertical transport position.
- Energy-sapping manual work no longer needed, enabling a great time-saving.
- Width: 1,200 mm,
Weight: 180 kg – 195 kg.

Requirements

- Required connection to machine: 3rd control circuit.



Pot gripper

- Easily pick up and safely transport diverse pots or round containers of different sizes.
- No damage when gripping. Taking hold is continuous.
- Pot diameter: 500 mm – 1,100 mm,
Max. payload: 500 kg,
Weight: 139 kg.

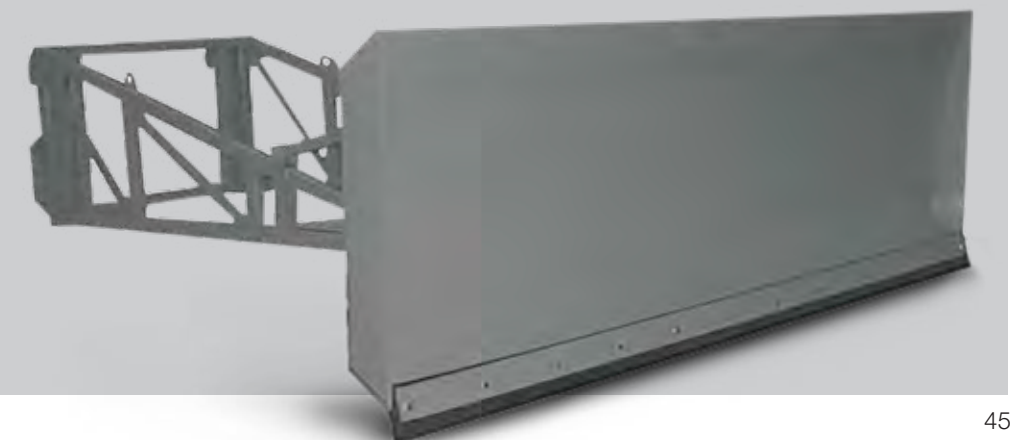
Requirements

- Required connection to machine: 3rd control circuit.



Material slide

- To move bulk materials, like salt, cereals.
- Exchangeable wear plate made of plastic.
- Substantially extends the range of the machine.
- Width: 2,500 mm,
Length: 2,000 mm.



The matching options for your business.

Individual, need-based and economical.



A separate 4th control circuit that is independently and individually operated:
The machine is equipped with a dual-acting auxiliary control circuit.

- Advantage:**
- Allows the use of hydraulically activated attachments with several connections and functions (e.g. a round bale stacking device or snow blower).



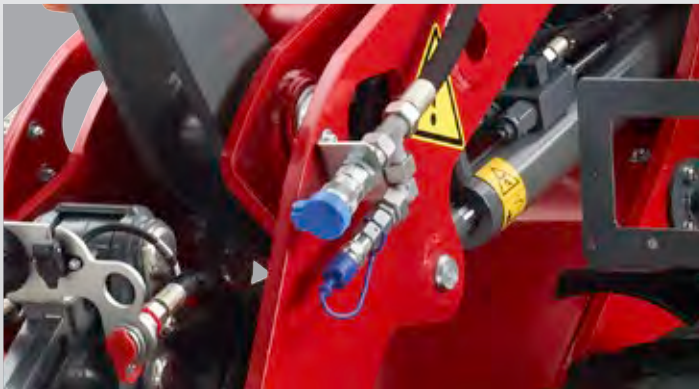
Speed increase to 30 km/h:
The machine is equipped with a speed of 30 km/h.

- Advantage:**
- Faster transposing of the machine is possible.
 - Time savings and increased economic efficiency.



Electrical connections (front and rear):
Connections for electrically operated additional functions of attachments (e.g. rotary sweeper with water-spraying equipment).

- Advantage:**
- The operation of electrically-operated additional functions of attachments is therefore possible.
 - The switch-over of additional functions of hydraulic attachments is possible.



High Flow:
The machine is equipped with High-Flow high performance-hydraulics.

- Advantage:**
- Enables operation of front attachments demanding a lot of oil (like a snow blower).



Hand-inching:
With the low-speed control, very slow travel speeds can be achieved at a constant engine speed.

- Advantage:**
- When using attachments that, for example, are operated with a constant high rpm but simultaneously with a very low travel speed (e.g. a rotary sweeper), you do not have to constantly operate the foot inching pedal.



Counterweight:
The machine is heavier due to a counterweight (floor panel on rear carriage) and cast rear weight.

- Advantage:**
- A higher tipping load is achieved and heavier loads can be transported with dimensions remaining the same.



Dual tyres:
Equipped with two additional tyres on the front axle.

- Advantage:**
- The front axle extends with the additional tyres, which also presents a higher degree of stability.



Pressureless return:
The hydraulic oil flows in a separate line via the hydraulic filter back into the hydraulic oil tank.

- Advantage:**
- Attachments with their own hydraulic motor can guide the return oil without increased dynamic pressure back into the hydraulic oil tank.



WEIDEMANN

designed for work

Weidemann – traditionally efficient.

For decades, our mission has been to lighten the load of commercial agriculture by the mechanisation of stable and yard operations. This led to the design and development of the Hoftrac®, which has become a generic term for its own equipment category – the original comes from Weidemann.

The close co-operation between the Weidemann developers and our end users has repeatedly led to innovative concepts and a sophisticated product programme with high usability and mature

technology. We stand by this and continue to pursue our chosen path. Our customers benefit from high productivity, investment security and have a strong partner in Weidemann, who is always at their side.

Our machines and services perform at a high level with a work operation that never fails to impress. Made precisely for this. Weidemann – designed for work.

Weidemann – your strong partner.

All-round care.



Comprehensive dealer network.

Weidemann has a wide network of select dealers in Germany and Europe. Each dealer is part of a well-organised system. In addition to consulting and selling new machines, our dealers are happy to provide you with reliable customer service and supply you with spare parts. Weidemann offers regular training for dealers so that your contact partners are always up to date.



Attractive financing programme.

In Germany, Weidemann offers attractive options for financing or leasing machines thanks to various framework agreements. Weidemann distributors also offer various financing options at an international level. Get in touch with your local contact partner to find out about current conditions.



Personal training and instruction.

When you decide to purchase a Weidemann machine, you will not be left in the dark. When the machine is handed over, you and your entire team will receive detailed instructions on the operation and maintenance of the machine. If you would like to know more, simply contact your dealer. He or she is just around the corner and will be happy to help without bureaucracy.



Speed is of the essence in the spare parts sector!

As our Weidemann machines are generally used by you daily; it must therefore be possible for your machines to be repaired, when required, as quickly as possible. To achieve this, Weidemann provides a central spare parts warehouse and presents an electronic 24 hr order service to specialist dealers with supply within 24 hr within Europe. Many of our distributors have also developed their own well-arranged spare parts and maintenance item warehouses so that the most common parts are available on site.



WEIDEMANN

designed for work

The Weidemann product range.



The multi-functional Hoftracs®.
Powerful helper for every application.



The powerful wheel loader.
Available either with load arm or telescopic arm.



The compact telehandler.
Aim high with optimal stability.



Attachments and tires.
Your Weidemann machine becomes a multi-tool!
The optimal attachment and the right tyres for every task.



WM.EMEA.10398.V01.EN-GB/03/2024

Weidemann GmbH

Elfringhäuser Weg 24
34497 Korbach
Germany
Tel. +49(0)5631 50 16 94 0
Fax +49(0)5631 50 16 94 666
info@weidemann.de
www.weidemann.com